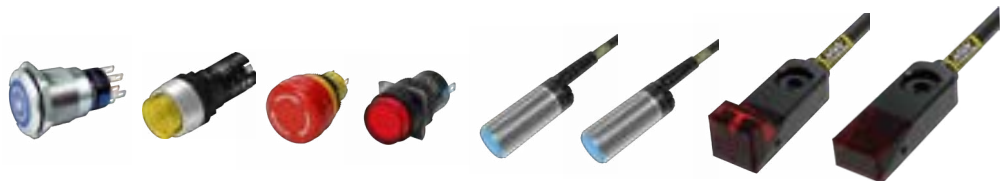
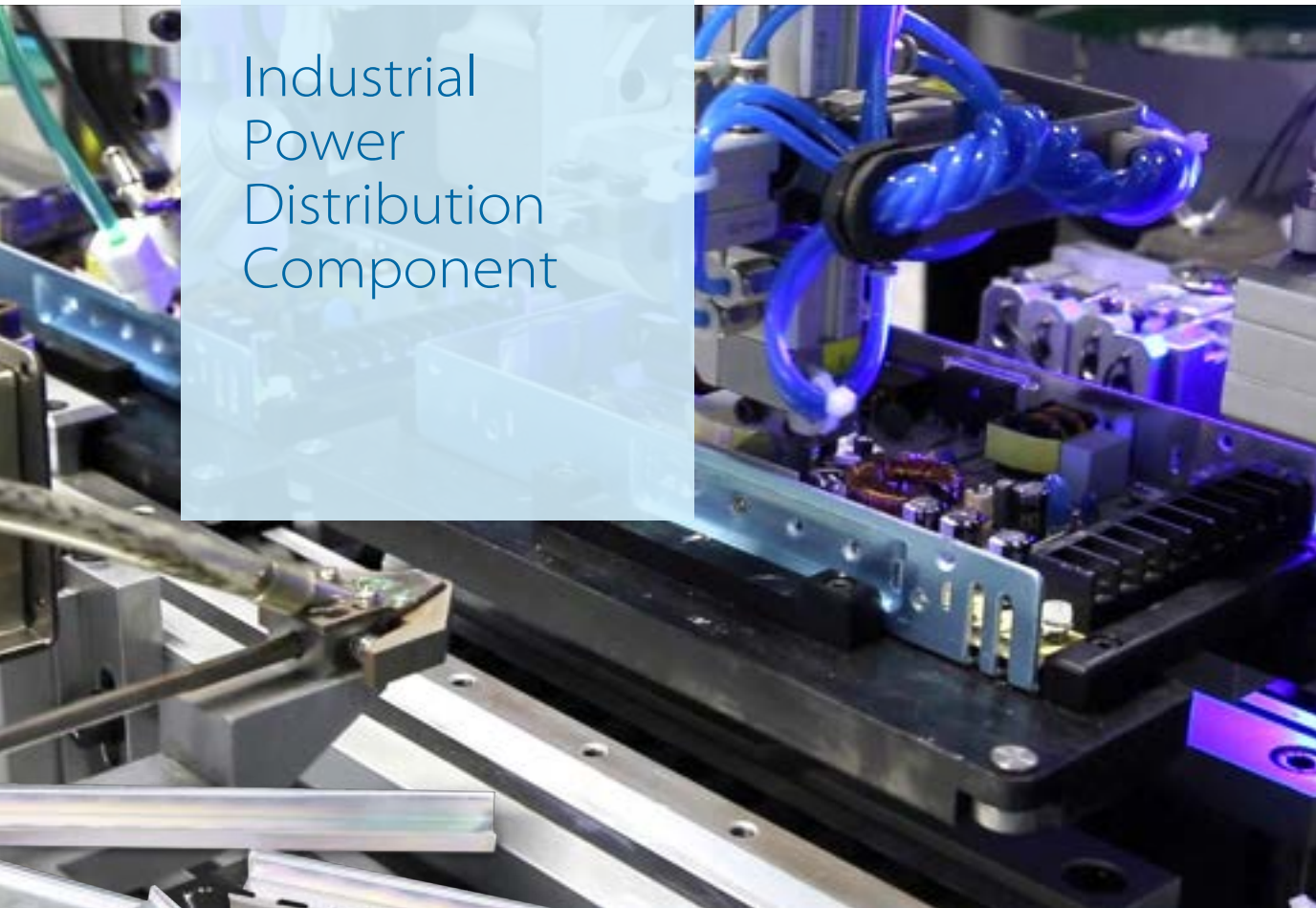




Industrial Power Distribution Component



Features

- Solid housing design for operator and contact block to reduce installation space
- Complete type with 16mm & 22mm version
- IP66 protection rating
- With anti-rotation latch design on the operator
- Tighten or disassemble the fixing nut by hand tools or finger freely
- PUSH-IN quick wiring design
- Single contact and double wiring holes design, capable of solid wire, strand wire and European terminal wiring
- New partition and spring structure design, increase the wire holding force and stability
- The contact blocks and lamp holders are distinguished by color which is clearly recognizable
- Waterproof Silicon Sleeve: Provides IP66 protection for the contact under the mounting panel

Emergency Switch

Part No.	Photo	Assembly Hole (mm ²)	Operator	Contact	Light	Wiring	IP Level	Safety
CP2E-BVExR		22	Pushlock turn / Pull to reset	1NO 1NC 2NO 2NC 1N01NC	None	Push-in	66	  
CP2E-LVExxR				1NO 1NC	Red Light 24V			
E1E19-F620RA-F41		16	Pushlock turn / Pull to reset	2NC 1NC 2NC 1NC	None	Soldering	65	   
E1E19-F620RA-F42								
E1E19-F620RM-F41		16	Pushlock turn / Pull to reset	2NC 1NC 2NC 1NC	None	Soldering	65	   
E1E19-F620RM-F42								
ADA16E6-R11-x1K/R		16	Pushlock turn / Pull to reset	2NC 1N01NC 1NC	Red Light 24V	Soldering	65	   